

VERMICULAR CAST IRON

Chemical Composition Analysis		
%	Requirements	Actual
C	3.00-3.50	3.300
Mn	0.30-0.75	0.480
Si	2.80-3.20	3.010
P	0.00-0.10	0.038
S	0.00-0.08	0.016
Cr	0.00-0.40	0.250
Ti	0.05-0.10	0.050
Fe	BALANCE	



×100

Hardness	
	170HBS ± 5

Pearlite	20.00%
Ferrite	80.00%

GS-800 CAST IRON

Analysis		
%	Requirements	Actual
C	3.30-3.60	3.54
Mn	0.50-0.75	0.68
Si	2.00-2.30	2.02
P	0.00-0.10	0.044
S	0.00-0.08	0.022
Mo	0.50-0.80	0.72
V	0.05-0.15	0.11
Ti	0.10-0.20	0.18



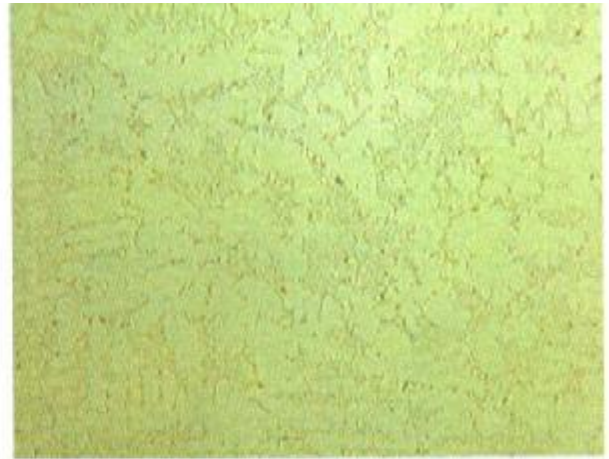
×100

Hardness	
	145HBS ± 5

Graphite		Matrix	
Shape	I	Pearlite	5.00%
Distribution	E/D	Ferrite	95.00%
Size	E/D/7-8		

K250-Q3 CAST IRON

Analysis		
%	Requirements	Actual
C	3.30-3.60	3.54
Mn	0.50-0.75	0.66
Si	2.00-2.30	2.02
P	0.00-0.10	0.041
S	0.00-0.08	0.022
Mo	0.40-0.60	0.48
V	0.05-0.15	0.11
Ti	0.10-0.20	0.18



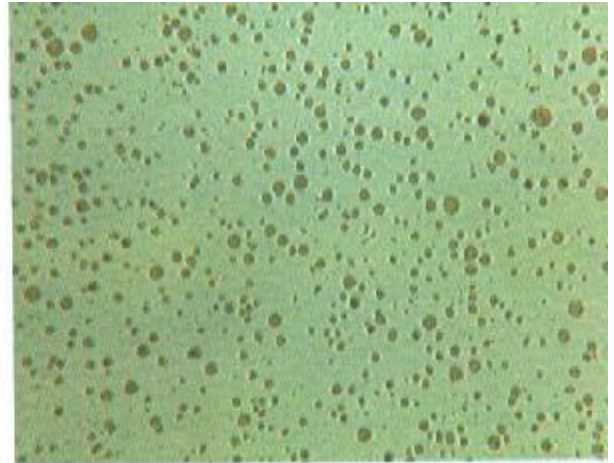
×100

Hardness	
	145HBS ± 5

Graphite		Matrix	
Shape	I	Pearlite	5.00%
Distribution	E/D	Ferrite	95.00%
Size	E/D/7-8		

DUCTILE CAST IRON

Chemical Composition Analysis		
%	Requirements	Actual
C	3.00-3.60	3.50
Mn	0.30-0.40	0.23
Si	3.00-4.00	3.03
P	0.00-0.08	0.05
S	0.00-0.04	0.016
Cu	0.00-0.60	0.48
Re	0.01-0.03	0.015
Mg	0.02-0.08	0.031



×100

Hardness	
	170HWS ± 5

Pearlite	10%
Ferrite	90%